

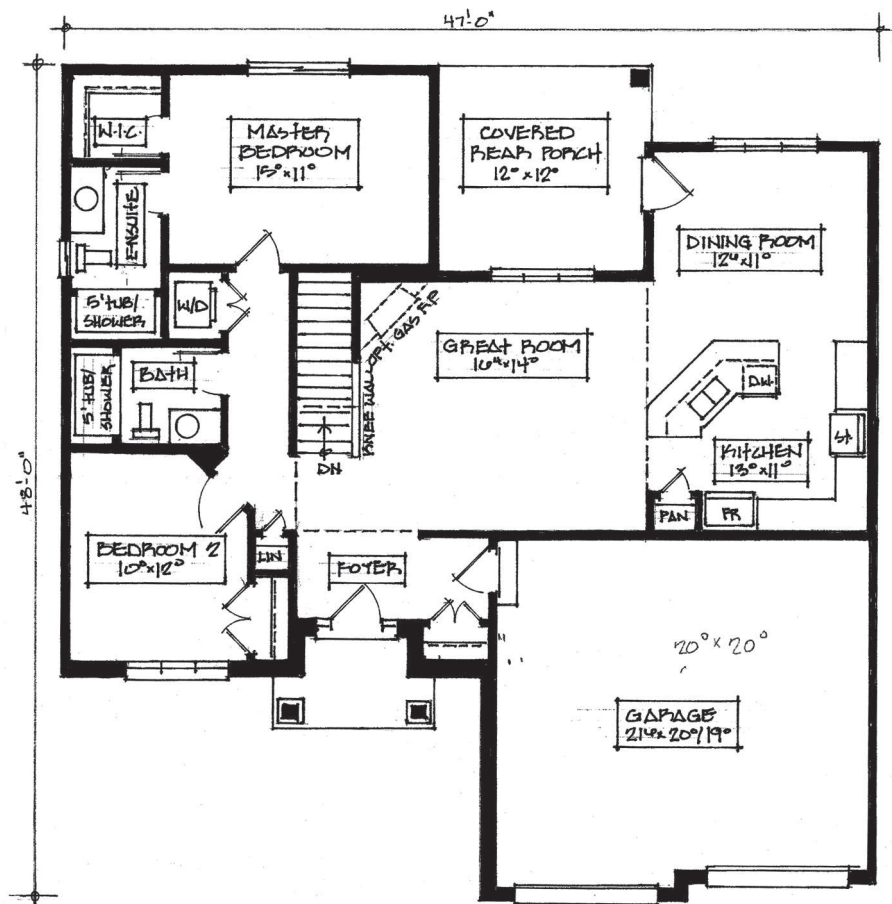
THE JORDYN



home features

- 2 bedrooms
- 2 bathrooms
- Main floor laundry
- Master bedroom & ensuite with walk-in closet
- 9' ceilings
- 2 car garage
- Wood beam front porch roof

1275 sq. ft
bungalow



PARK LANE
HOME BUILDERS LIMITED

Exclusive Representation
by House of Homes
(St. Catharines) Ltd.
Brokerage