

# THE LATTE

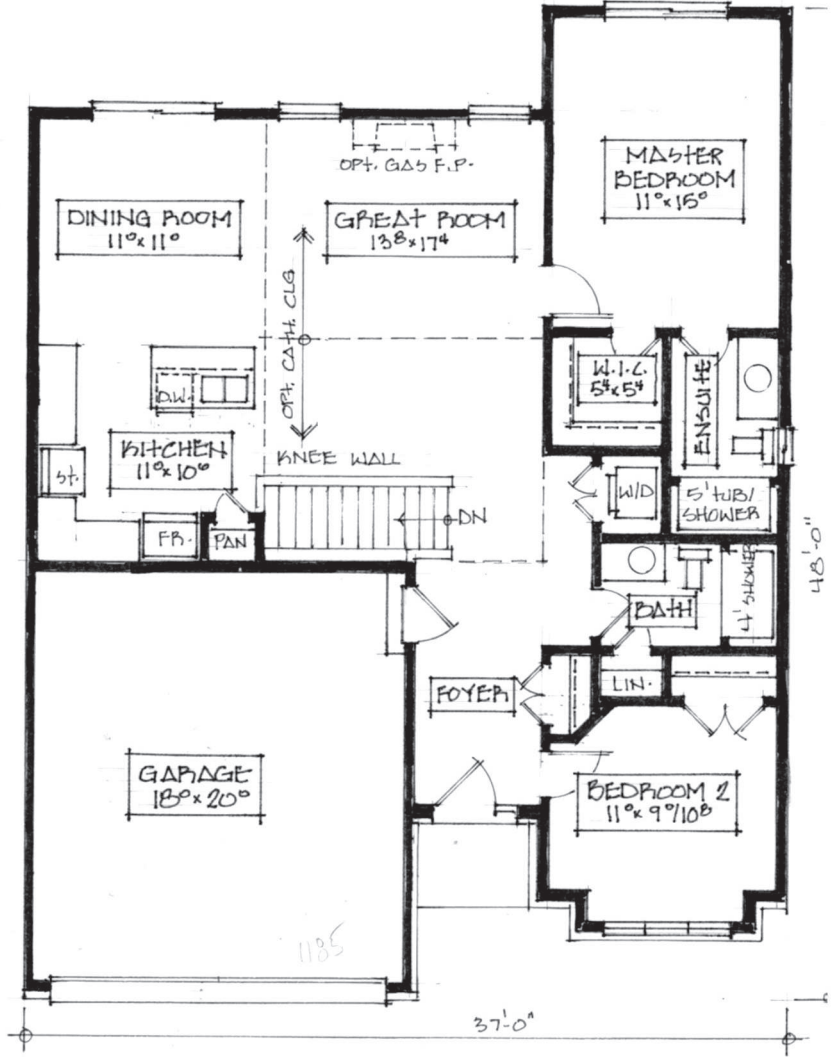


\*Elevation shown with upgraded features\*

## home features

- 2 bedrooms
- 2 bathrooms
- Main floor laundry
- Master bedroom & ensuite with walk-in closet
- 9' ceilings
- Double garage

1185 sq. ft  
bungalow



**PARK LANE**  
HOME BUILDERS LIMITED

Exclusive Representation  
by House of Homes  
(St. Catharines) Ltd.  
Brokerage